

NATIONAL ICE CENTRE

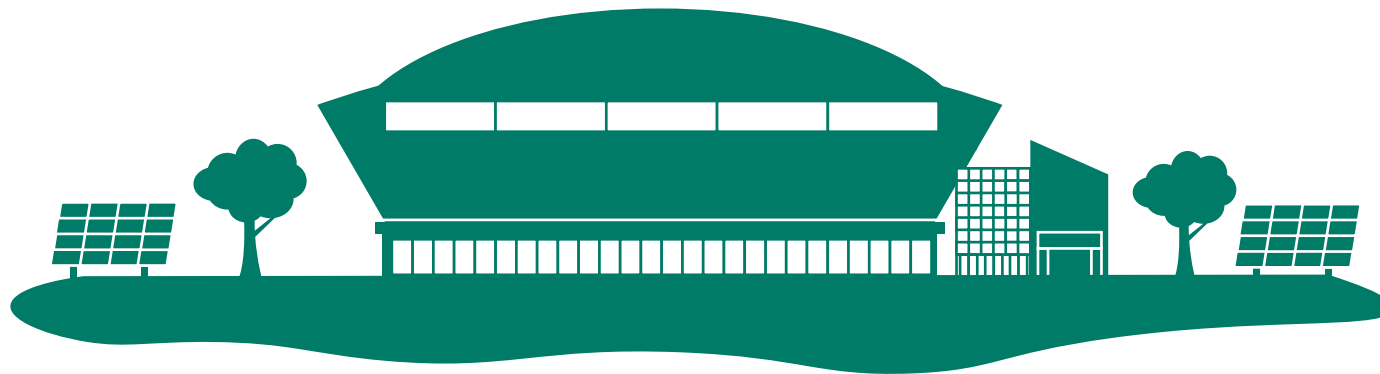
# SUSTAINABILITY

MOTORPOINT ARENA NOTTINGHAM

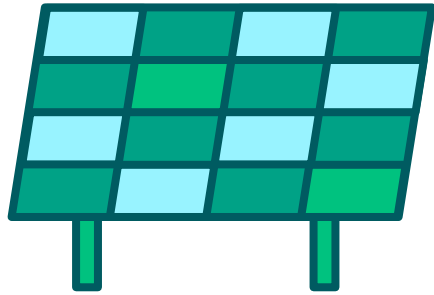


Here at the National Ice Centre and Motorpoint Arena Nottingham, we're committed to reducing our environmental impact, helping our customers in turn reduce the carbon footprint of their visit. Whether we're looking at energy, water, or recycling initiatives, as the biggest entertainment venue in the East Midlands, we want to limit the impact of our presence on the environment and make a difference.

We're committed to support Nottingham's ambition to become the UK's first sustainable carbon neutral city by 2028, and we will continue our passion and dedication to shaping a greener environment for future generations.



# ENERGY



Our  
**SOLAR  
PANELS**

produce enough  
electricity to

**POWER 30 LIVE MUSIC  
EVENTS PER YEAR!**



**95%**

Of our lights are  
LED to further  
improve  
efficiencies



Our cutting-edge  
building  
management  
system & smart  
metres monitor the  
venue 24/7 to help us

**PRESERVE & SAVE  
ENERGY**



we have reduced  
overall energy  
consumption  
across the site

**BY OVER 25%**  
over the last  
few years

**We've been a zero to landfill venue for over eleven years. Any non-recyclable waste goes to a local incinerator which is turned into electricity and heat to power our building**

# RECYCLING



WE'RE OUR VERY OWN  
MINI RECYCLING  
CENTRE

0%

Of our waste goes to  
landfill



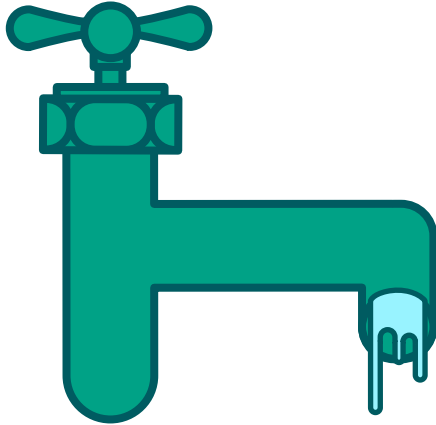
In an average year, we recycle  
**33 TONS OF WASTE**  
that's equivalent to  
the weight of  
**450 MUSIC FANS!**



We  
**REUSE**  
**WASTEWATER**  
to make our ice  
rinks

**We reuse or upcycle everything we can. If we can't find a use for something, we'll give it to staff or to charity**

# WATER & ICE



We have our own  
**NATURAL WATER  
SUPPLY**  
and water fountains  
around the venue



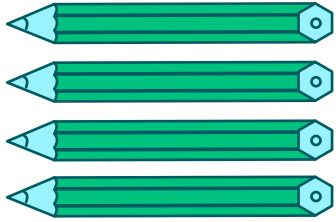
A bespoke  
refrigeration plant (that  
makes our ice) was installed  
in 2020 resulting in a

**20%**  
**REDUCTION IN  
ENERGY**



Ureco urinal  
pods reduce  
flushing this saves  
**100,000 LITRES  
OF WATER EACH  
YEAR**

# PEOPLE



We only purchase  
**ECO-FRIENDLY  
PROMOTIONAL ITEMS**  
for conferences & marketing  
at external events



LIVE Green initiative  
working closely with  
**ARTISTS AND PROMOTERS**  
to make their event as  
sustainable as possible



We have a dedicated  
sustainability group  
that constantly look  
for new ways to  
**REDUCE ENERGY USAGE**  
& keep staff motivated  
to think green



We take part in regular 'green'  
**EVENTS & INITIATIVES**  
including Earth Day,  
Vegetarian Day & Recycling  
Week



Our staff are undertaking  
Carbon Literacy  
**TRAINING**

# CATERING

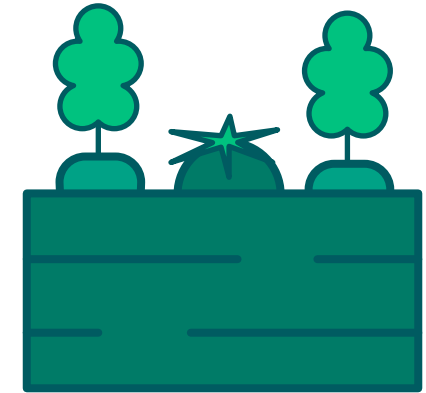


Our Vegan Kitchen, situated on the Arena's concourse was **THE UK'S FIRST** dedicated vegan food outlet in a UK Arena



We were the first UK indoor entertainment & sports venue to introduce **ECO-FRIENDLY CUPS** in 2017.

We recycle just **0.6 OF A TON OF PLASTIC** in an average year, compared to 4.5 tons before eco-cups

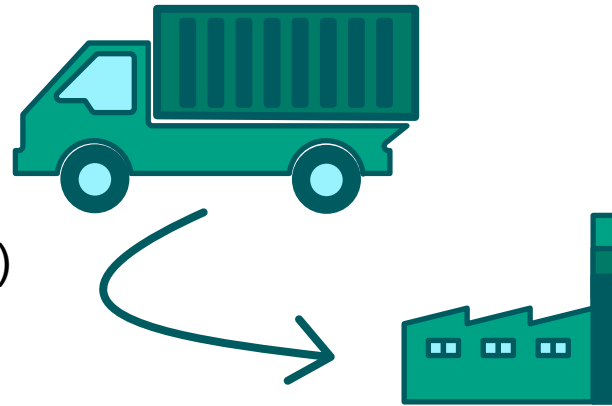


We source produce as **LOCALLY** as possible

# A ZERO-LANDFILL VENUE SINCE 2011

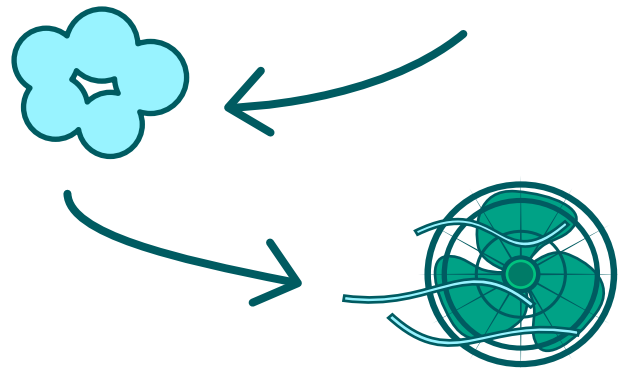
## Our waste to energy journey

Non recyclables are transported from our venue via an electric vehicle to the **FCC** incinerator (just 0.3 miles away)



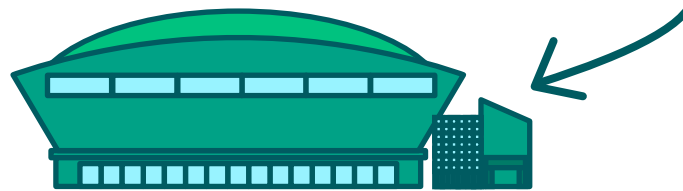
The emissions the non-recyclables emit are strictly controlled via a 24/7 **MONITORING** system as they burn

The by-product **GENERATES STEAM** at high temperatures



Steam turns the turbine which converts **ENERGY INTO ELECTRICITY**

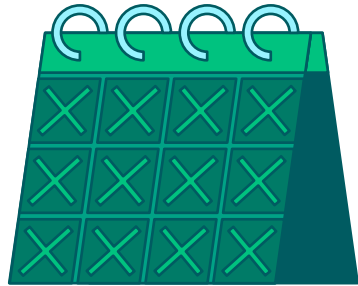
That electricity **POWERS** our building & supplies heating and hot water to our building





# OUR CONTINUED COMMITMENT

## WHAT'S NEXT FOR US



Continued business participation in annual  
**SUSTAINABILITY EVENTS**



We're exploring options to bring in  
**REUSABLE HOT DRINK CUPS**



We're **COMMITTED** to supporting Nottingham's ambition to become the UK's first sustainable carbon neutral city by 2028 and are working closely with the City Council to deliver this



Installation of vehicle  
**CHARGING POINTS** in our car parks



**EXPLORING PARTNERSHIPS** with local woodland charities. We'd like to offer a tree planting service for customers that drive to an event and wish to offset their carbon

# HELP WHEN YOU VISIT US



## USE THE STAIRS

It costs 11p in energy for every lift use



For our staff, conferencing delegates & National Ice Centre customers:

- ⚡ Bring a reusable **WATER BOTTLE** and fill up at one of our water stations
- ⚡ Bring a reusable **HOT DRINKS CUP** and get 20p off a hot drink in our Encore Bar



Visit our **VEGAN KITCHEN** on the concourse and enjoy a delicious biryani with poppadoms or a vegan kebab!



**TRAVEL ON PUBLIC TRANSPORT** if you can



**RECYCLE** using the bins provided

NATIONAL ICE CENTRE

# SUSTAINABILITY

MOTORPOINT ARENA NOTTINGHAM

